

New Delac

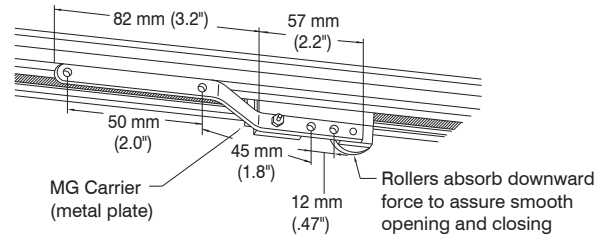


- Multi-purpose rail with a wide range of applications.
- Manual and cord draw possible.
- Exceptional durability satisfying the strict demands of a 10,000 open/close test.

New Delac's Unique Features and Applications

Using the Overlap MG Carrier for Hand provides better light shielding.

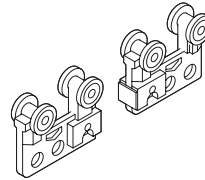
The Overlap MG Carrier effectively prevents unwanted light from streaming into a room. Light is kept out even where the curtains overlap in the middle. And the rollers run very smoothly.



*Perfect light shielding may not be possible depending on the type of window and installation method. Please consult a specialist when designing window covering for a darkroom or photo lab.

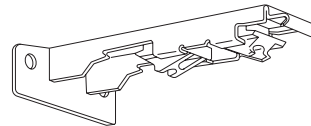
Use of Centre magnet

New Delac's Centre Magnet help completely close the curtain without any backward movement avoiding glare seeping from the centre.



NT Bracket convenient when there is insufficient vertical space for installation.

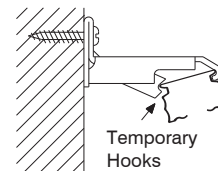
This bracket is convenient when there is insufficient vertical space for bracket installation. It is firmly secured with just two screws.



Brackets with a temporary hook makes installation easier.

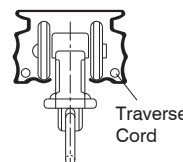
(Excluding Extra Brackets)

This bracket holds a rail while allowing you to adjust a rail position. Once you finish adjusting a position, simply snap the rail into the bracket to secure firmly.



Smooth opening and closing with separate grooves for rollers and traverse cord.

Installation is easy and the cord is located in a groove to prevent it from becoming entangled with the rollers. The smooth-running rollers also assure easy opening and closing.

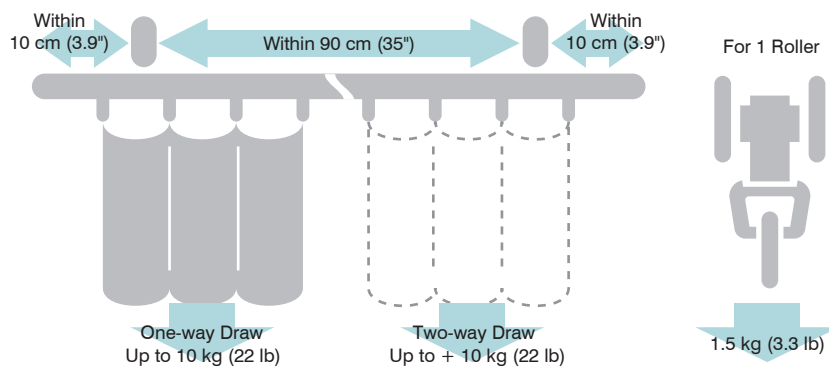


Materials and Finishes

Parts	Material	Finish	
Rail	Aluminum alloy extrusion material	Silver	Alumite
		Umber	Alumite umber
		White	Alumite white
		Warm white	Warm white

Parts	Material	Finish
Roller	Plate	Hard polyethylene
	Wheel	Hard polyethylene
	Oval ring	Stainless steel
End Cap	Body	Nylon
	Oval ring	Stainless steel
Bracket	Body	Steel
	Hook	Acetal resin

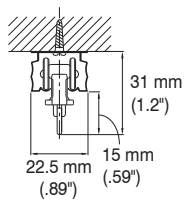
Bracket Installation Interval and Allowable Curtain Load



Installation Dimensions

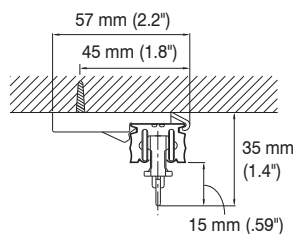
Ceiling Attachment

Direct attachment



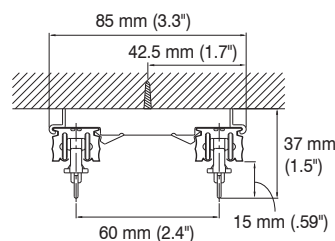
Ceiling Single Bracket

Bracket width = 18 mm (.71")



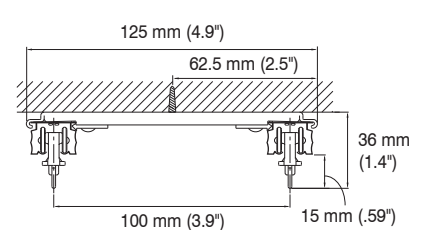
Ceiling Double Bracket

Bracket width = 18 mm (.71")



Extra Ceiling Double Bracket

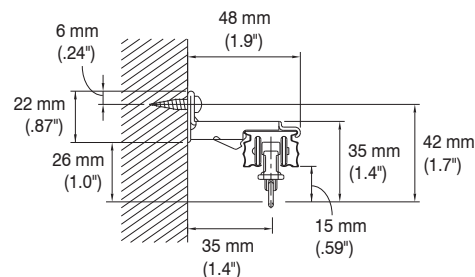
Bracket width = 23 mm (.91")



Wall Attachment

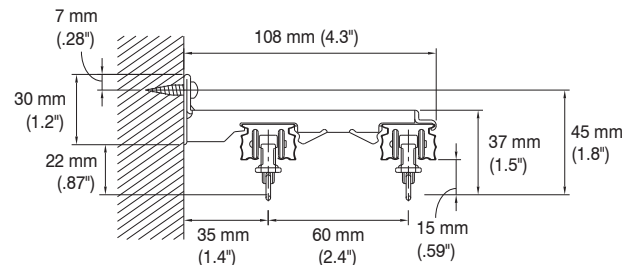
Single Bracket

Bracket width = 19 mm (.75")



Double Bracket

Bracket width = 19 mm (.75")

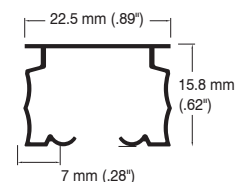


New Delac Rails

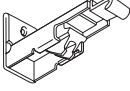
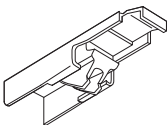
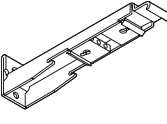
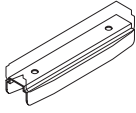
Warm white

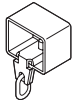
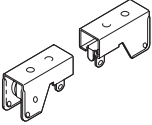
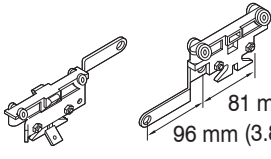




Umber



Parts of New Delac

Product Name		Product Code
Brackets	Single Bracket 	Umber 00210214 Warm white 00210215-TI
	Double Bracket 	Umber 00210217 Warm white 00210218-TI
	Ceiling Single Bracket 	White 00210191-TI
	Extra Double Bracket 	White 00210329
	Splice for Aluminum Rail 	00210128
	MG Carrier 	Natural 00210054-TI

Product Name		Product Code
End Caps	End Cap 	Natural 50770001-TI Umber 00210086
	Pulley Set 	Natural 00210002-TI
Rollers	Master Roller 	81 mm (3.2") 00210007-TI 96 mm (3.8")
	Traverse Cord 2.8 mm DIA.	White 00580009
	Tension Pulley 240 	White 00500005
		Brown 00500002
	Roller (8 pieces per strip) 	Natural 50620001-TI